

Name:

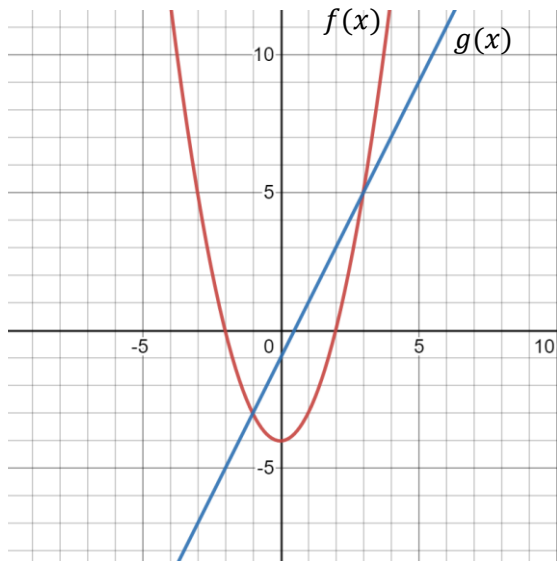
**Section 2.2 – Arithmetic Combinations of Functions**

Given:  $f(x) = 3x + 5$  and  $g(x) = x^2 - 7x + 8$

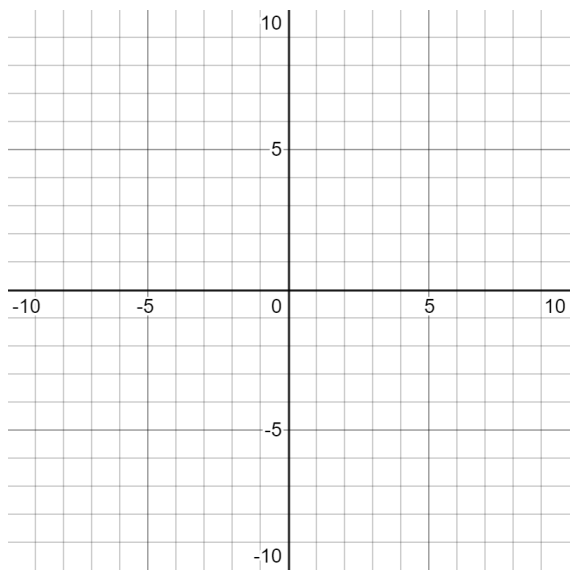
Find:

$(f + g)(x)$	$(g - f)(x)$
$\left(\frac{f}{g}\right)(x)$ ; <i>Identify Domain Restrictions</i>	$(fg)(x)$

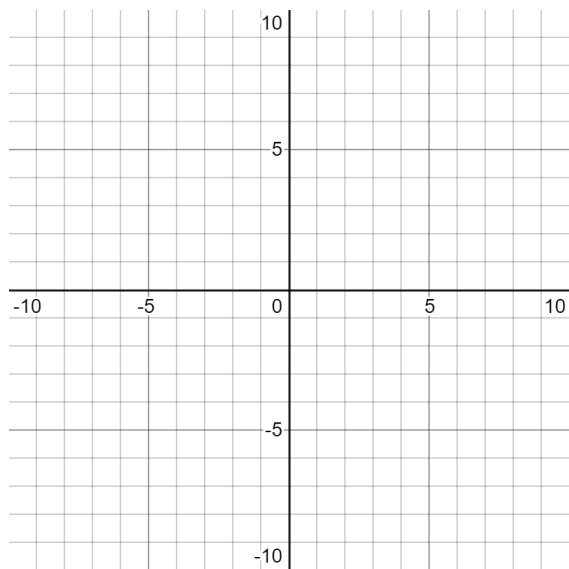
Given the Functions:



Graph:  $(f + g)(x)$



Graph:  $(f + f)(x)$



Graph:  $(g + g)(x)$

